

Write your name here

Surname

Other names

Pearson
Edexcel GCE

Centre Number

--	--	--	--	--	--

Candidate Number

--	--	--	--	--	--

Biology

Advanced

Unit 5: Energy, Exercise and Coordination

Wednesday 17 June 2015 – Morning

Time: 1 hour 45 minutes

Paper Reference

6BI05/01

You must have:

A copy of the scientific article taken from *Nature* and *Scientific American* (enclosed).

Total Marks

Instructions

- Use **black** ink or ball-point pen.
- **Fill in the boxes** at the top of this page with your name, centre number and candidate number.
- Answer **all** questions.
- Answer the questions in the spaces provided
– *there may be more space than you need.*

Information

- The total mark for this paper is 90.
- The marks for **each** question are shown in brackets
– *use this as a guide as to how much time to spend on each question.*
- Questions labelled with an **asterisk** (*) are ones where the quality of your written communication will be assessed
– *you should take particular care with your spelling, punctuation and grammar, as well as the clarity of expression, on these questions.*
- Candidates may use a calculator.

Advice

- Read each question carefully before you start to answer it.
- Keep an eye on the time.
- Try to answer every question.
- Check your answers if you have time at the end.

Turn over ►

P44872A

©2015 Pearson Education Ltd.

1/1/1/1/e2/



PEARSON

Answer ALL questions.

Some questions must be answered with a cross in a box ☒. If you change your mind about an answer, put a line through the box ☒ and then mark your new answer with a cross ☒.

1 Humans have a nervous system that has a variety of neurones.

(a) The human brain is made up of a number of areas containing many millions of neurones.

Place a cross in the box ☒ that identifies the areas of the brain associated with riding a bicycle uphill.

(i) the decision to ride the bicycle

(1)

- A** cerebrum
- B** cerebellum
- C** hypothalamus
- D** medulla

(ii) initiating an increase in sweating during the ride

(1)

- A** cerebrum
- B** cerebellum
- C** hypothalamus
- D** medulla



(b) Voltage-gated K^+ and Na^+ channels are involved in the transmission of impulses in sensory and motor neurones.

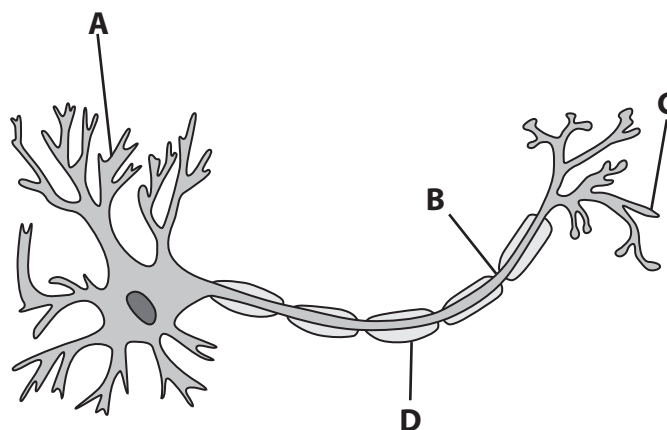
(i) The table below identifies two stages in the transmission of an impulse in a sensory neurone.

Place a tick (✓) in each box that correctly identifies whether the channels are open or closed during these two stages.

(2)

Stage	Voltage-gated K^+ channels open	Voltage-gated K^+ channels closed	Voltage-gated Na^+ channels closed
Depolarisation			
Repolarisation			

(ii) The diagram below shows a myelinated motor neurone.



Place a cross in the box ☒ that labels the site where neurotransmitters bind and initiate depolarisation.

(1)

- A
- B
- C
- D



(iii) Describe the differences in the structure of a myelinated sensory neurone and a myelinated motor neurone.

(3)

.....

.....

.....

.....

.....

.....

.....

.....

.....

.....

.....

(Total for Question 1 = 8 marks)



2 A human heart can work effectively for over a hundred years but many people throughout the world have heart problems.

(a) Explain how the sinoatrial node (SAN) ensures that oxygenated blood enters the aorta.

(4)

.....

.....

.....

.....

.....

.....

.....

.....

.....

.....

.....

.....

.....

.....

.....

.....

.....

.....

.....

.....



(c) The ECG below was recorded at rest.



(i) This person had a resting heart rate of 74 beats per minute.

Calculate the time taken for this ECG. Show your working.

(2)

Answer

(ii) Suggest suitable units for the vertical axis (y-axis) of this ECG.

(1)

(Total for Question 2 = 13 marks)



P 4 4 8 7 2 A 0 7 2 4

- 3 An investigation was carried out to study the effect of positive and negative physical and emotional experiences on humans.

The positive physical experience was a warm object placed on the arm of a person for five seconds.

The negative physical experience was a hot object placed on the arm of a person for five seconds.

All other variables were kept constant.

Two groups of people were used in this investigation. In the first group, the warm object was used before the hot object. In the second group, the hot object was used before the warm object.

After each experience, the individuals were asked to rate their feelings using the scoring system below.

Feelings	Score
Very bad	1
Bad	2
Neutral	3
Good	4
Very good	5

- (a) Suggest why one group had the warm object placed on their arm before the hot object and the other group had the hot object placed on their arm first.

(2)

.....

.....

.....

.....

.....

.....

.....

.....



(b) When the retina had recovered from bleaching, the resting potential of the bipolar neurones in the retina was found to be -43 mV.

The retina was then exposed to a range of light intensities. Each light intensity caused the bipolar neurones to depolarise. The peak voltage of the depolarisation for each light intensity was recorded.

All other variables were kept constant.

The investigation used retinas from an additional 14 rats.

The mean results are shown in the table below.

Light intensity / arbitrary units	Mean peak voltage of depolarisation / mV
1	11
3	18
6	19
9	20
12	20



(i) Using the information in the table, describe the effect of light intensity on the mean peak voltage of depolarisation.

(2)

.....

.....

.....

.....

.....

.....

.....

.....

(ii) Suggest an explanation for the effect of light intensity on the mean peak voltage of depolarisation in these neurones.

(4)

.....

.....

.....

.....

.....

.....

.....

.....

.....

.....

.....

.....

.....

.....

.....

.....

.....

.....

.....

.....

.....

.....



(c) Suggest **two** reasons why some people might have objections to the use of rats in this investigation.

(2)

.....

.....

.....

.....

.....

.....

.....

(Total for Question 4 = 13 marks)

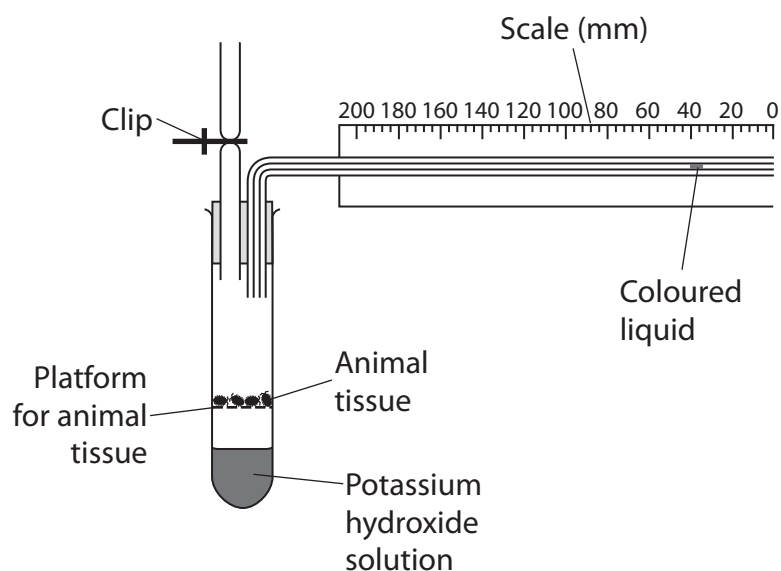


5 The tissues of some animals can carry out anaerobic and aerobic respiration.

(a) Three investigations were carried out to study respiration in an animal tissue, using the apparatus shown below.

The tissue used glucose as the respiratory substrate.

All other variables were kept constant.



The table below shows the three investigations that were carried out and the result for investigation 1.

Investigation	Type of respiration	Potassium hydroxide solution absent or present	Coloured liquid moved to the left	Coloured liquid moved to the right	Coloured liquid did not move
1	Anaerobic	Absent	<input checked="" type="checkbox"/>	<input checked="" type="checkbox"/>	<input checked="" type="checkbox"/>
2	Aerobic	Absent	<input checked="" type="checkbox"/>	<input checked="" type="checkbox"/>	<input checked="" type="checkbox"/>
3	Aerobic	Present	<input checked="" type="checkbox"/>	<input checked="" type="checkbox"/>	<input checked="" type="checkbox"/>

(i) Complete the table by placing a cross for each of investigations 2 and 3 to show the response of the coloured liquid.

(2)



(b) Explain how investigation 3, shown in the table, could be used to compare the rate of respiration of two different tissues.

(2)

.....

.....

.....

.....

.....

.....

.....

(Total for Question 5 = 11 marks)



6 A number of drugs, including EPO, have been used by athletes.

EPO is a drug that stimulates the formation of red blood cells. EPO has been used to enhance the performance of certain types of athlete.

(a) Sprinters usually have more fast twitch fibres in their leg muscles than long distance runners.

Suggest why EPO may have less of an effect on the performance of a sprinter than on a long distance runner.

(3)

.....

.....

.....

.....

.....

.....

.....

.....

.....

.....

.....

(b) Suggest **two** ethical reasons why the use of drugs, such as EPO, should be banned from sport.

(2)

.....

.....

.....

.....

.....

.....

.....

.....

(Total for Question 6 = 5 marks)



(c) Octopamine is a neurotransmitter (paragraph 24). Libersat and his team believe that wasp venom probably blocks octopamine receptors in the central nervous system of the cockroach.

Suggest **two** ways that the 'compound that reactivates octopamine receptors' (paragraph 25) could work.

(2)

.....

.....

.....

.....

.....

.....

.....

.....

.....

.....

(d) Suggest how scientists, such as Hughes, could have estimated that ants comprise 'half of all insect biomass worldwide' (paragraph 31).

(3)

.....

.....

.....

.....

.....

.....

.....

.....

.....

.....

.....

.....

.....

.....

.....

.....

.....

.....

.....

.....



(f) Suggest what is meant by the term **clock genes** (paragraph 35).

(2)

.....

.....

.....

.....

.....

.....

.....

.....

.....

(g) Suggest how a lack of 'signals' (paragraph 36) could lead to muscle atrophy.

(4)

.....

.....

.....

.....

.....

.....

.....

.....

.....

.....

.....

.....

.....

.....

.....

.....

.....

.....

.....

.....

.....



(h) 'Instead of one variable species' (paragraph 44), Evans, Hughes and Elliot have identified four new species of the fungus.

Suggest how these could have been identified as separate species.

(4)

.....

.....

.....

.....

.....

.....

.....

.....

.....

.....

.....

.....

.....

.....

.....

.....

.....

.....

.....

.....

.....

.....

.....

(i) There is evidence showing that ants parasitised by the fungus bite the main veins of leaves (paragraphs 35 and 47).

Suggest the advantages to the zombie fungus of this ant behaviour.

(2)

.....

.....

.....

.....

.....

.....

.....

.....

.....

.....

.....

.....

.....

.....

.....

.....

.....

.....

.....

.....

.....

.....

(Total for Question 7 = 30 marks)

TOTAL FOR PAPER = 90 MARKS



BLANK PAGE

