

SPM

SCIENCE

Paper 2
2015 – 2019

| | | |
|------------|---|----------|
| Chapter 1 | Scientific Investigation | Page --- |
| Chapter 2 | Body Coordination | Page 1 |
| Chapter 3 | Heredity And Variation | Page 6 |
| Chapter 4 | Matter And Substance | Page 19 |
| Chapter 5 | Energy And Chemical Changes | Page 28 |
| Chapter 6 | Nuclear Energy | Page 36 |
| Chapter 7 | Light, Color And Sight | Page 41 |
| Chapter 8 | Chemicals In Industry | Page 47 |
| Chapter 9 | Microorganisms And Food Production | Page 49 |
| Chapter 10 | Preservation And Conservation Of The Environment | Page 64 |
| Chapter 11 | Carbon Compounds | Page 69 |
| Chapter 12 | Motion | Page 76 |
| Chapter 13 | Food Technology And Production | Page 92 |
| Chapter 14 | Synthetic Materials In Industry | Page 96 |
| Chapter 15 | Electronics And Information And Communication Technology (ICT) | Page 101 |
| | Answers | Page 105 |

1 - (1511-2015-Paper 2-Q5) - Body Coordination

Diagram 5 shows the location of endocrine glands of a woman.
 Rajah 5 menunjukkan kedudukan kelenjar endokrin seorang wanita.

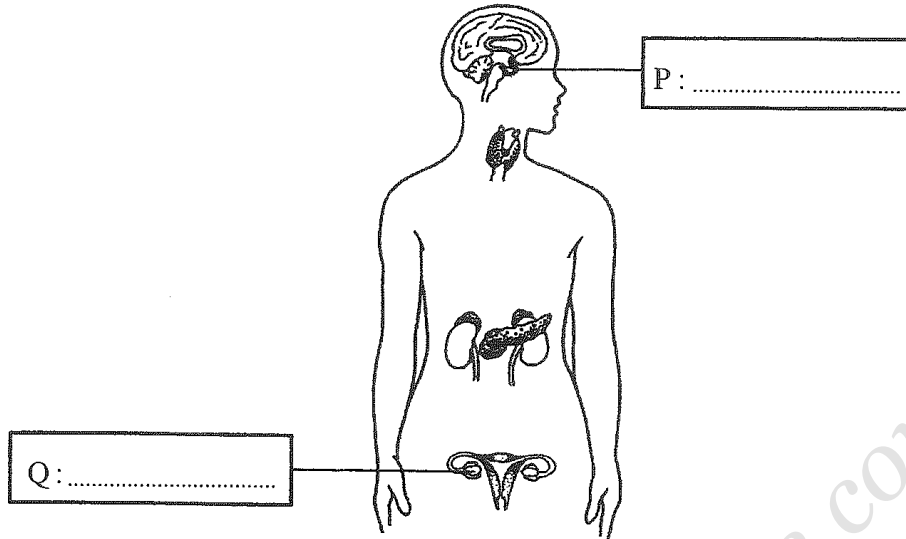


Diagram 5
 Rajah 5

- (a) Name glands P and Q in the boxes provided in Diagram 5.
 Namakan kelenjar P dan kelenjar Q dalam petak yang disediakan dalam Rajah 5.
 [2 marks]
 [2 markah]
- (b) State **one** function of hormone secreted by glands P and Q.
 Nyatakan **satu** fungsi hormon yang dirembeskan oleh kelenjar P dan kelenjar Q.
 P:
 Q:
 [2 marks]
 [2 markah]
- (c) State **one** effect to the woman if both glands Q are removed.
 Nyatakan **satu** kesan kepada wanita itu jika kedua-dua kelenjar Q dikeluarkan.

 [1 mark]
 [1 markah]
- (d) Label with letter T the thyroid gland in Diagram 5.
 Labelkan dengan huruf T pada kelenjar tiroid dalam Rajah 5.
 [1 mark]
 [1 markah]

2 - (1511-2016-Paper 2-Q5) - Body Coordination

Diagram 5.1 shows an emergency situation.
Rajah 5.1 menunjukkan satu situasi cemas.

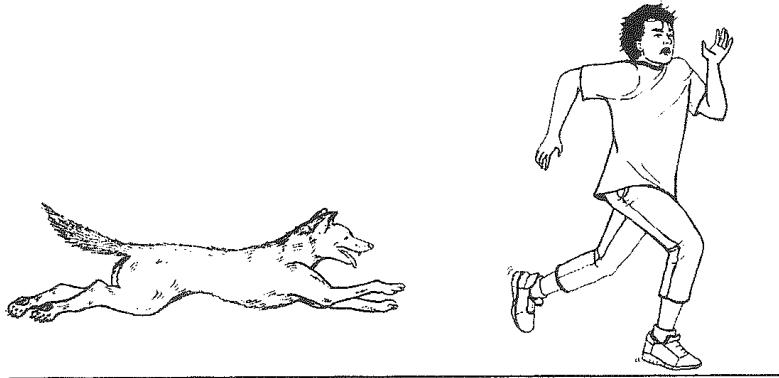


Diagram 5.1
Rajah 5.1

(a) Based on Diagram 5.1, state **two** body coordination involved.
*Berdasarkan Rajah 5.1, nyatakan **dua** sistem koordinasi badan yang terlibat.*

- 1.
- 2.

[2 marks]
[2 markah]

(b) State **one** sensory organ that involved in Diagram 5.1.
*Nyatakan **satu** organ deria yang terlibat dalam Rajah 5.1.*

.....
.....

[1 mark]
[1 markah]

(c) State the function of endocrine gland in situation shown in Diagram 5.1.
Nyatakan fungsi kelenjar endokrin dalam situasi yang ditunjukkan dalam Rajah 5.1.

.....
.....

[1 mark]
[1 markah]

(d) Complete the flow chart in Diagram 5.2 which shows the relationship between two systems using the words given.

Lengkapkan carta alir dalam Rajah 5.2 yang menunjukkan hubungan antara dua sistem dengan menggunakan perkataan yang diberi.

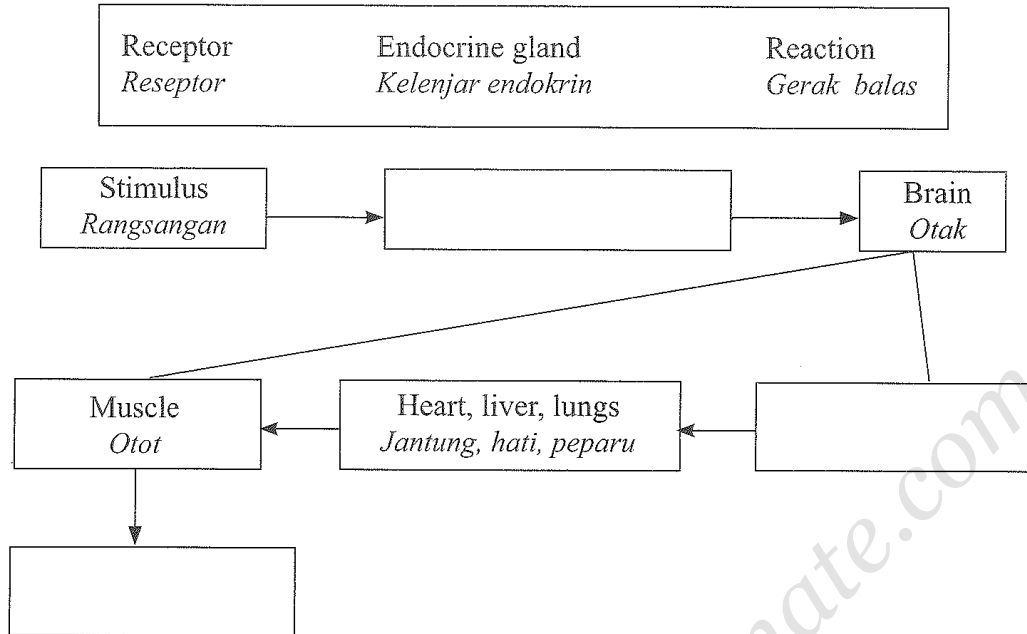


Diagram 5.2
Rajah 5.2

[2 marks]
[2 markah]

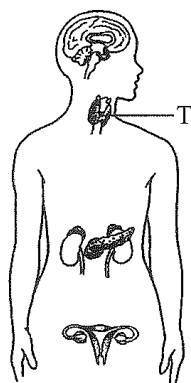
www.exam-mate.com

ANSWERS

www.exammate.com

1 - (1511-2015-Paper 2-Q5) - Body Coordination

- (a) P: Pituitary gland
Kelenjar pituitari
Q: Ovary
Ovari
- (b) P: Stimulates growth
Merangsang pertumbuhan
Q: Stimulates egg (ovum) production
Merangsang penghasilan telur (ovum)
- (c) Infertility
Kemandulan
- (d)



2 - (1511-2016-Paper 2-Q5) - Body Coordination

- (a) 1. Nervous system/Nervous coordination
Sistem saraf/Koordinasi saraf
2. Endocrine system/Hormonal coordination
Sistem endokrin/Koordinasi hormon
- (b) Eyes/Ears
Mata/Telinga
- (c) Secretes adrenaline hormone and prepares the body for emergency
Merembeskan hormon adrenalina dan menyediakan badan untuk keadaan kecemasan
- (d)

