

SPM

PHYSICS

Paper 1
2015 – 2019

Chapter 1	Introduction To Physics	Page 1
Chapter 2	Forces And Motion	Page 7
Chapter 3	Forces And Pressure	Page 38
Chapter 4	Heat	Page 63
Chapter 5	Light	Page 81
Chapter 6	Waves	Page 96
Chapter 7	Electricity	Page 123
Chapter 8	Electromagnetism	Page 140
Chapter 9	Electronics	Page 159
Chapter 10	Radioactivity	Page 176
	Answers	Page 187

1 - (4531-2015-Paper 1-Q1) - Introduction to Physics

Which of the following SI unit is correct for each quantity?

Unit SI manakah yang betul bagi setiap kuantiti?

	Quantity <i>Kuantiti</i>	SI unit <i>Unit SI</i>
A	Mass <i>Jisim</i>	Gram (g) <i>Gram (g)</i>
B	Time <i>Masa</i>	Minute (min) <i>Minit (min)</i>
C	Length <i>Panjang</i>	Centimetre (cm) <i>Sentimeter (cm)</i>
D	Temperature <i>Suhu</i>	Kelvin (K) <i>Kelvin (K)</i>

2 - (4531-2015-Paper 1-Q2) - Introduction to Physics

Which quantity is a vector quantity?

Kuantiti manakah adalah kuantiti vektor?

- | | |
|---------------------------|-------------------------------|
| A Mass
<i>Jisim</i> | C Pressure
<i>Tekanan</i> |
| B Energy
<i>Tenaga</i> | D Momentum
<i>Momentum</i> |

3 - (4531-2016-Paper 1-Q1) - Introduction to Physics

Which pair of quantities is correct?

Pasangan kuantiti manakah adalah benar?

	Scalar quantity <i>Kuantiti skalar</i>	Vector quantity <i>Kuantiti vektor</i>
A	Has magnitude only <i>Mempunyai magnitud sahaja</i>	Has magnitude only <i>Mempunyai magnitud sahaja</i>
B	Has direction only <i>Mempunyai arah sahaja</i>	Has magnitude only <i>Mempunyai magnitud sahaja</i>
C	Has magnitude only <i>Mempunyai magnitud sahaja</i>	Has magnitude and direction <i>Mempunyai magnitud dan arah</i>
D	Has magnitude and direction <i>Mempunyai magnitud dan arah</i>	Has direction only <i>Mempunyai arah sahaja</i>

4 - (4531-2016-Paper 1-Q2) - Introduction to Physics

The statement below refer to
Penyataan di bawah merujuk kepada

All values of the measurement are close to each other.
Semua nilai pengukuran adalah hampir antara satu sama lain.

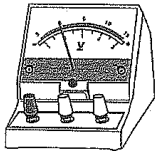
- | | |
|-----------------------------------|----------------------------------|
| A Consistency
<i>Konsisten</i> | C Sensitivity
<i>Kepekaan</i> |
| B Efficiency
<i>Kecekapan</i> | D Accuracy
<i>Kejituan</i> |

5 - (4531-2017-Paper 1-Q2) - Introduction to Physics

Which measuring instrument measures vector quantity?

Alat pengukur manakah mengukur kuantiti vektor?

A



B



C



D



www.exam-mate.com

6 - (4531-2017-Paper 1-Q3) - Introduction to Physics

Diagram 1.1 shows the vernier calipers reading when the jaws are closed tightly.

Diagram 1.2 shows the vernier calipers is used to measure the outer diameter of a test tube.

Rajah 1.1 menunjukkan bacaan angkup vernier pada ketika rahangnya tertutup rapat.

Rajah 1.2 menunjukkan angkup vernier tersebut digunakan untuk mengukur diameter luar sebuah tabung uji.

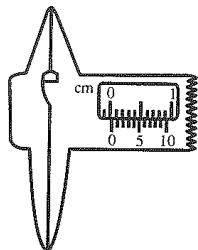


Diagram 1.1

Rajah 1.1

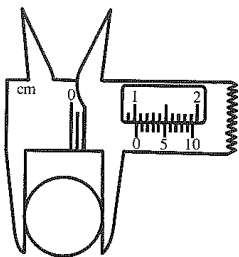


Diagram 1.2

Rajah 1.2

What is the outer diameter of the test tube?

Berapakah diameter luar tabung uji itu?

- A 0.96 cm C 1.03 cm
 B 1.00 cm D 1.06 cm

7 - (4531-2017-Paper 1-Q4) - Introduction to Physics

Diagram 2 shows a graph of relationship between pressure, P and volume, V.

Rajah 2 menunjukkan graf hubungan antara tekanan, P dengan isi padu, V.

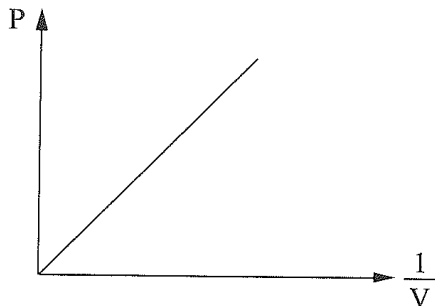


Diagram 2
Rajah 2

Which pair is correct?

Pasangan manakah yang betul?

	Responding variable <i>Pemboleh ubah bergerak balas</i>	Relationship <i>Hubungan</i>
A	$\frac{1}{V}$	P is directly proportional to $\frac{1}{V}$ <i>P berkadar terus dengan $\frac{1}{V}$</i>
B	$\frac{1}{V}$	P increases linearly to $\frac{1}{V}$ <i>P bertambah secara linear dengan $\frac{1}{V}$</i>
C	P	P is directly proportional to $\frac{1}{V}$ <i>P berkadar terus dengan $\frac{1}{V}$</i>
D	P	P increases linearly to $\frac{1}{V}$ <i>P bertambah secara linear dengan $\frac{1}{V}$</i>

8 - (4531-2018-Paper 1-Q1) - Introduction to Physics

Change 300 km h⁻¹ to m s⁻¹.

Tukarkan 300 km j⁻¹ kepada m s⁻¹.

- A 0.083 m s⁻¹ C 83.33 m s⁻¹
 B 5.00 m s⁻¹ D 5 000 m s⁻¹

ANSWERS

www.exam-mate.com

1 - (4531-2015-Paper 1-Q1) - *Introduction to Physics*

D

2 - (4531-2015-Paper 1-Q2) - *Introduction to Physics*

D

3 - (4531-2016-Paper 1-Q1) - *Introduction to Physics*

C

4 - (4531-2016-Paper 1-Q2) - *Introduction to Physics*

A

5 - (4531-2017-Paper 1-Q2) - *Introduction to Physics*

B

6 - (4531-2017-Paper 1-Q3) - *Introduction to Physics*

B

7 - (4531-2017-Paper 1-Q4) - *Introduction to Physics*

C

8 - (4531-2018-Paper 1-Q1) - *Introduction to Physics*

C

9 - (4531-2018-Paper 1-Q2) - *Introduction to Physics*

A

10 - (4531-2018-Paper 1-Q3) - *Introduction to Physics*

D

11 - (4531-2019-Paper 1-Q1) - *Introduction to Physics*

A

12 - (4531-2019-Paper 1-Q2) - *Introduction to Physics*

B

www.exam-mate.com

exam m (A+) te